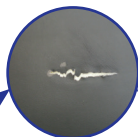


CleanPatch®

Medical surface repair patch for hospital beds and stretchers

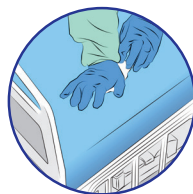
CleanPatch®
is an FDA and
Health Canada
registered Class I
medical device.



	✓ Use CleanPatch®	✗ Do Not Use CleanPatch®
Mattress Age and Condition	Usable - within expected lifespan	No longer suitable for use as per facility protocol
Appearance	No signs of fluid ingress or contamination	Mattress cover is stained or warped
Fluid Penetration	Passes the paper towel test	Fails the paper towel test
Size of Damage	Each area of damage should be covered with a single patch	We do not recommend layering patches to cover a single area

The Paper Towel Test may be used to assess if fluid has penetrated the inner core.

Fold a paper towel into 4 layers and press down over the damaged area. If the paper appears wet, the mattress has failed the test.



IMPORTANT

- ✓ Mattresses should be inspected for damage during every cleaning
- ✓ CleanPatch® works best on polyurethane, nylon or vinyl materials, and may not adhere properly to some coated surfaces
- ✓ Always assess the damage and look for any signs of contamination such as staining or warping
- ✓ Measure the damage and use the correct size of CleanPatch® to ensure proper adhesion
- ✓ Review and follow the instructions for use on the package insert
- ✓ If the patch lifts or peels, remove and re-apply immediately with a new CleanPatch®
- ✓ Do not cut CleanPatch® to maintain product integrity

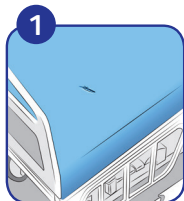
STEP 1: Assess the damage to determine if CleanPatch[®] is appropriate (see over)

STEP 2: Measure the damage to determine which size of CleanPatch[®] to use

Product #	Shape	Shape	Damage Size*
#11001	Round	2 inch (5 cm)	Up to 1/2 inch (1.3 cm)
#10001	Square	3.5 x 3.5 inch (9 x 9 cm)	Up to 2 inches (5 cm)
#12001	Rectangle	3.5 x 6 inch (9 x 15 cm)	Up to 4 inches (10 cm)

*There must be at least 1/2 inch margin around the damage to ensure adhesion

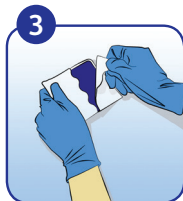
STEP 3: Apply CleanPatch[®]



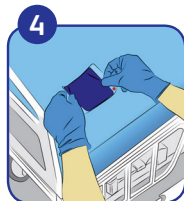
Identify and measure damaged area.



Clean mattress as per hospital protocol. Let dry.



Remove white backing from CleanPatch.



Hold edges of patch and position it over the damage.



Apply firm pressure to the patch, especially around the edges.



Slowly remove the clear top liner, pulling from to .



Smooth CleanPatch from center outwards. For best results wait 1 minute.



Clean the patch and surrounding area as per hospital protocol.

STEP 4: Track the repair. Write your initials and date on the patch with a non-toxic Sharpie[®] marker



For more information visit www.solutionsdesignedforhealthcare.com/cleanpatch

CLEANPatch[®]